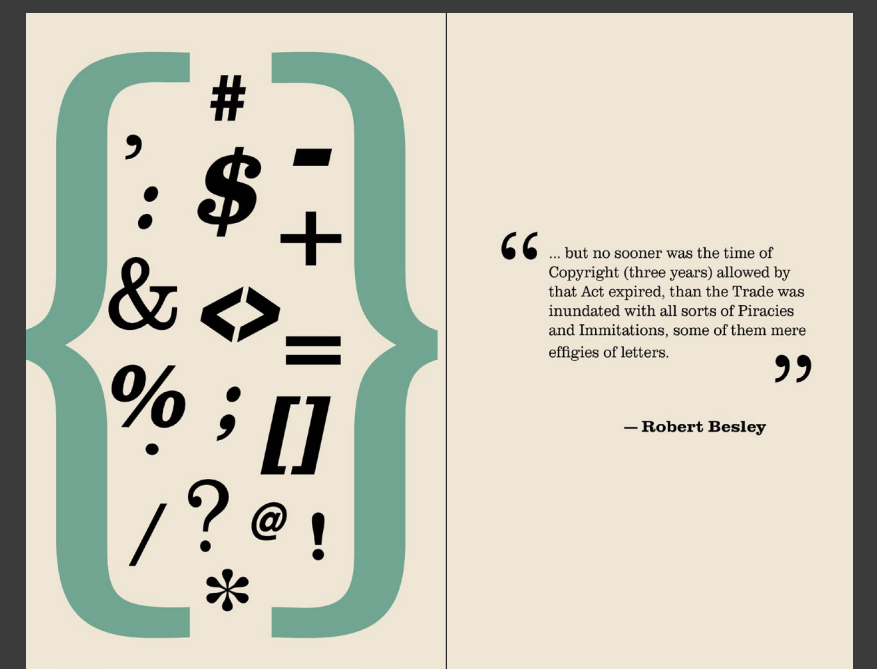
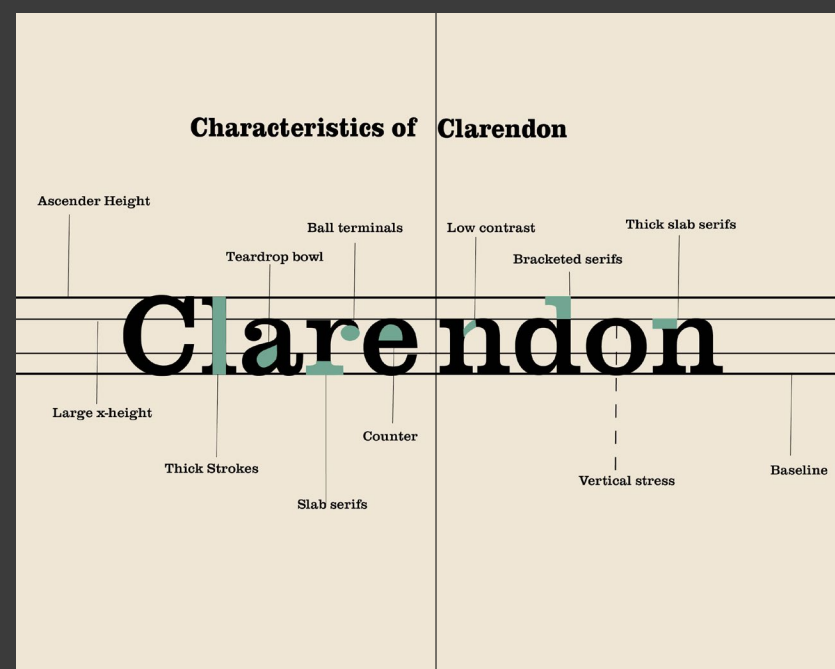
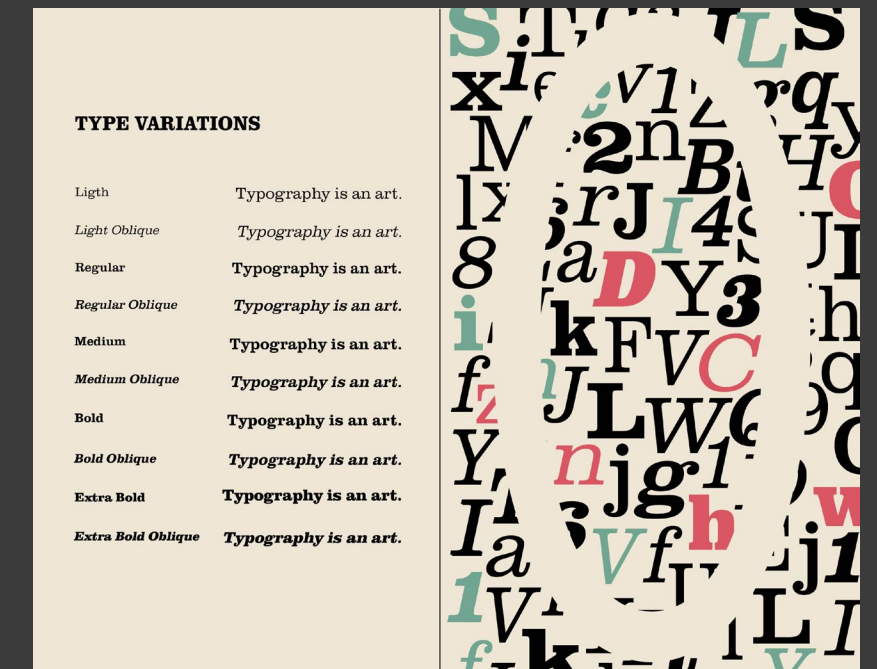
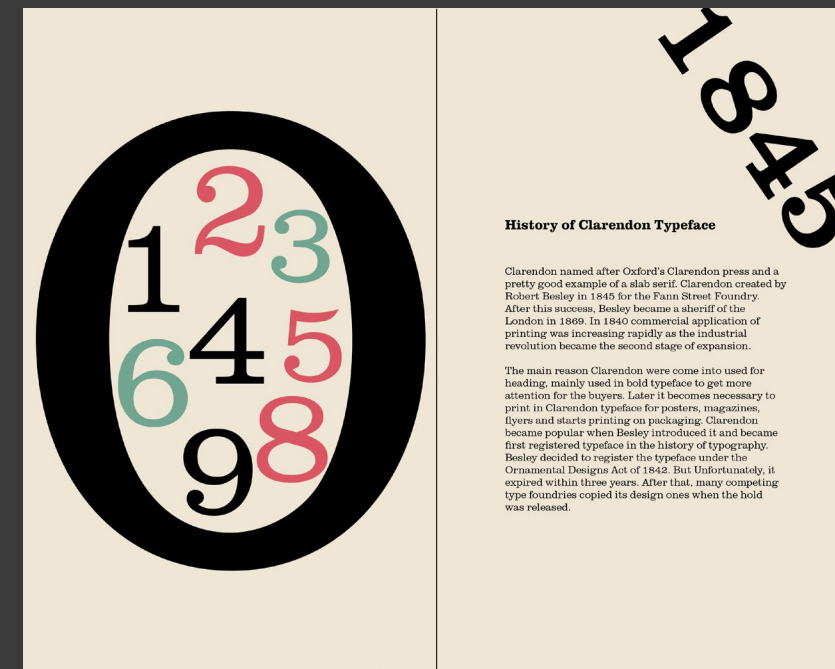


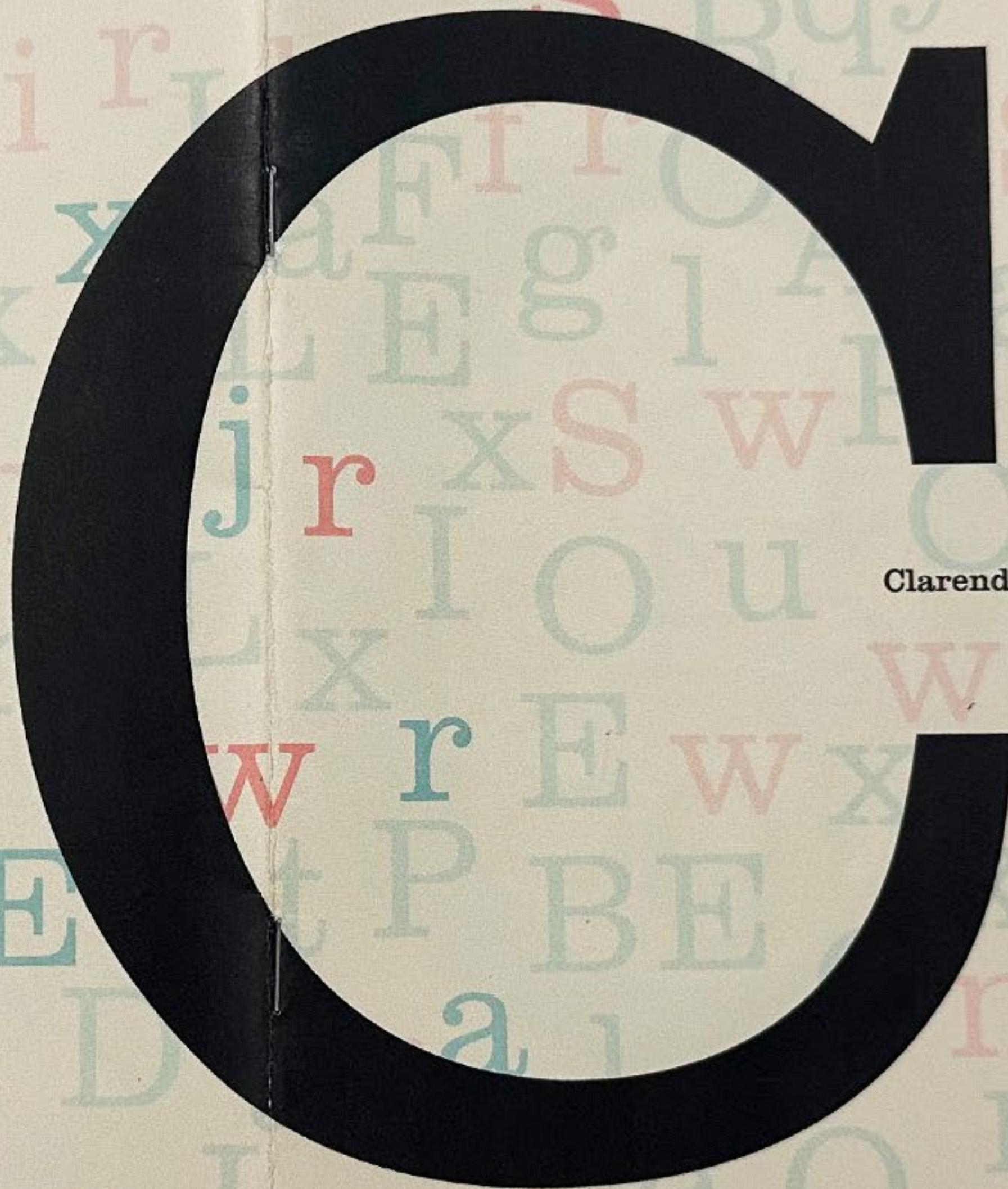
CLARENDON TYPEFACE

This book and poster showcases the typeface “Clarendon,” created by Robert Besley.

It features the designer, type anatomy, and manipulated letterforms that highlight the beauty of Clarendon’s thick and thin strokes.



Robert Besley



Clarendon



History of Clarendon Typeface

History ce

Clarendon named after Oxford's Clarendon press and a pretty good example of a slab serif. Clarendon created by Robert Besley in 1845 for the Fann Street Foundry. After this success, Besley became a sheriff of the London in 1869. In 1840 commercial application of printing was increasing rapidly as the industrial revolution became the second stage of expansion.

The main reason Clarendon were come into used for heading, mainly used in bold typeface to get more attention for the buyers. Later it becomes necessary to print in Clarendon typeface for posters, magazines, flyers and starts printing on packaging. Clarendon became popular when Besley introduced it and became first registered typeface in the history of typography. Besley decided to register the typeface under the Ornamental Designs Act of 1842. But Unfortunately, it expired within three years. After that, many competing type foundries copied its design ones when the hold was released.

1845

UPPERCASE LETTER

A B C D E F G

H I J K L M N

O P Q R S T U

V W X Y Z

0 1 2 4 5 6 7

8 9

lowercase letter

a b c d e f g

h i j k l m n

o p q r s t u

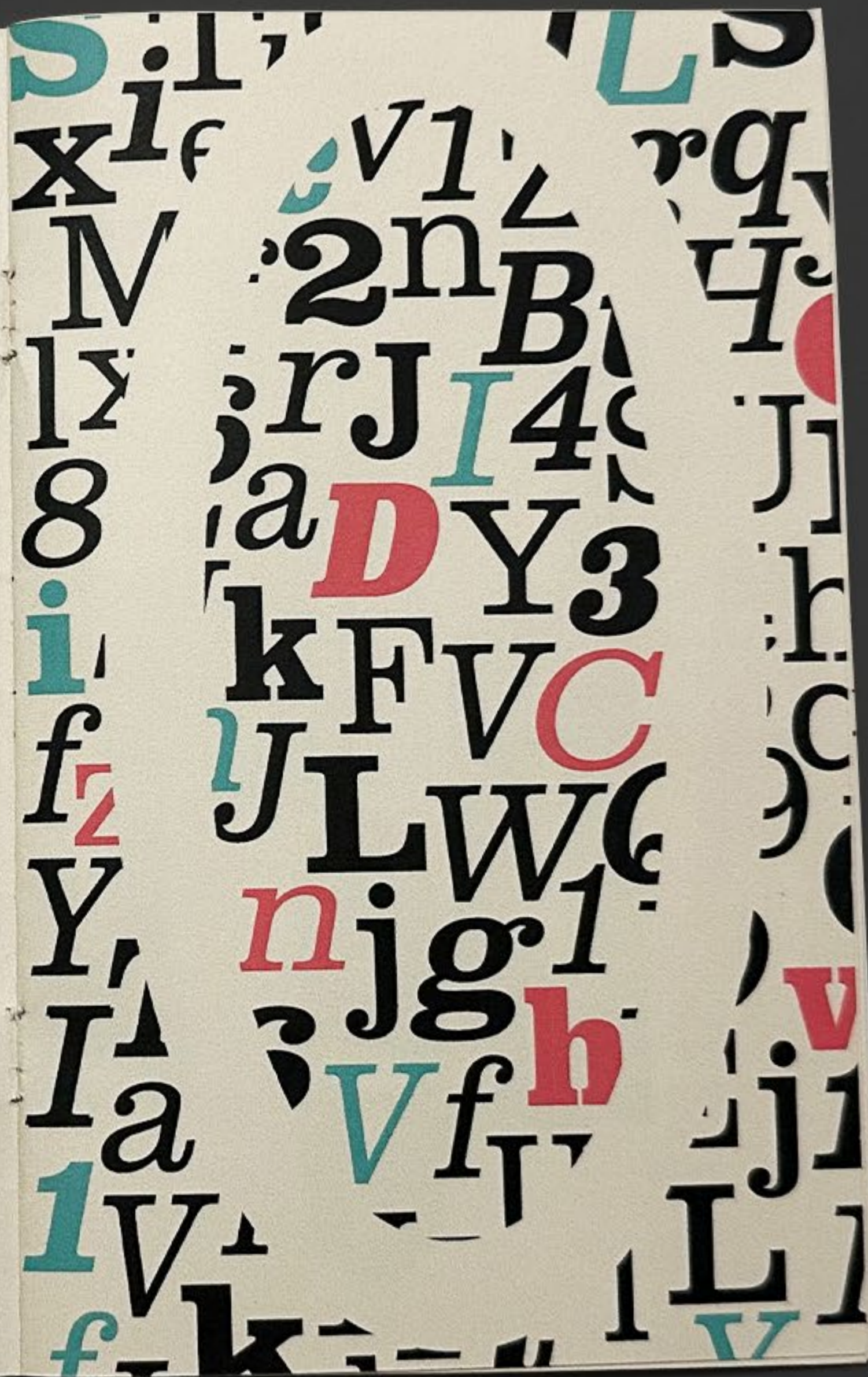
v w x y z

0 1 2 4 5 6 7

8 9

TYPE VARIATIONS

Ligth	Typography is an art.
<i>Light Oblique</i>	<i>Typography is an art.</i>
Regular	Typography is an art.
<i>Regular Oblique</i>	<i>Typography is an art.</i>
Medium	Typography is an art.
<i>Medium Oblique</i>	<i>Typography is an art.</i>
Bold	Typography is an art.
<i>Bold Oblique</i>	<i>Typography is an art.</i>
Extra Bold	Typography is an art.
<i>Extra Bold Oblique</i>	<i>Typography is an art.</i>





French Clarendon Typeface

French Clarendon was a trendy wood type font. Characters are dense and condensed with bracketed serifs, which measure approximately 1/4 to 1/3 the height of the letter. Dozens of decorative wood type designs have been created based on French Clarendon.



French Clarendon Typeface

French Clarendon was a trendy wood type font. Characters are dense and condensed with bracketed serifs, which measure approximately 1/4 to 1/3 the height of the letter. Dozens of decorative wood type designs have been created based on French Clarendon.

Characteristics of Clarendon

Ascender Height

Ball terminals

Low contrast

Thick slab serifs

Teardrop bowl

Bracketed serifs

Clarendon

Large x-height

Counter

Thick Strokes

Vertical stress

Baseline

Slab serifs

72-Point **Hello**

60-Point **Hello**

48-Point **Hello**

36-Point **Hello**

30-Point **Hello**

24-Point **Hello**

18-Point **Hello**

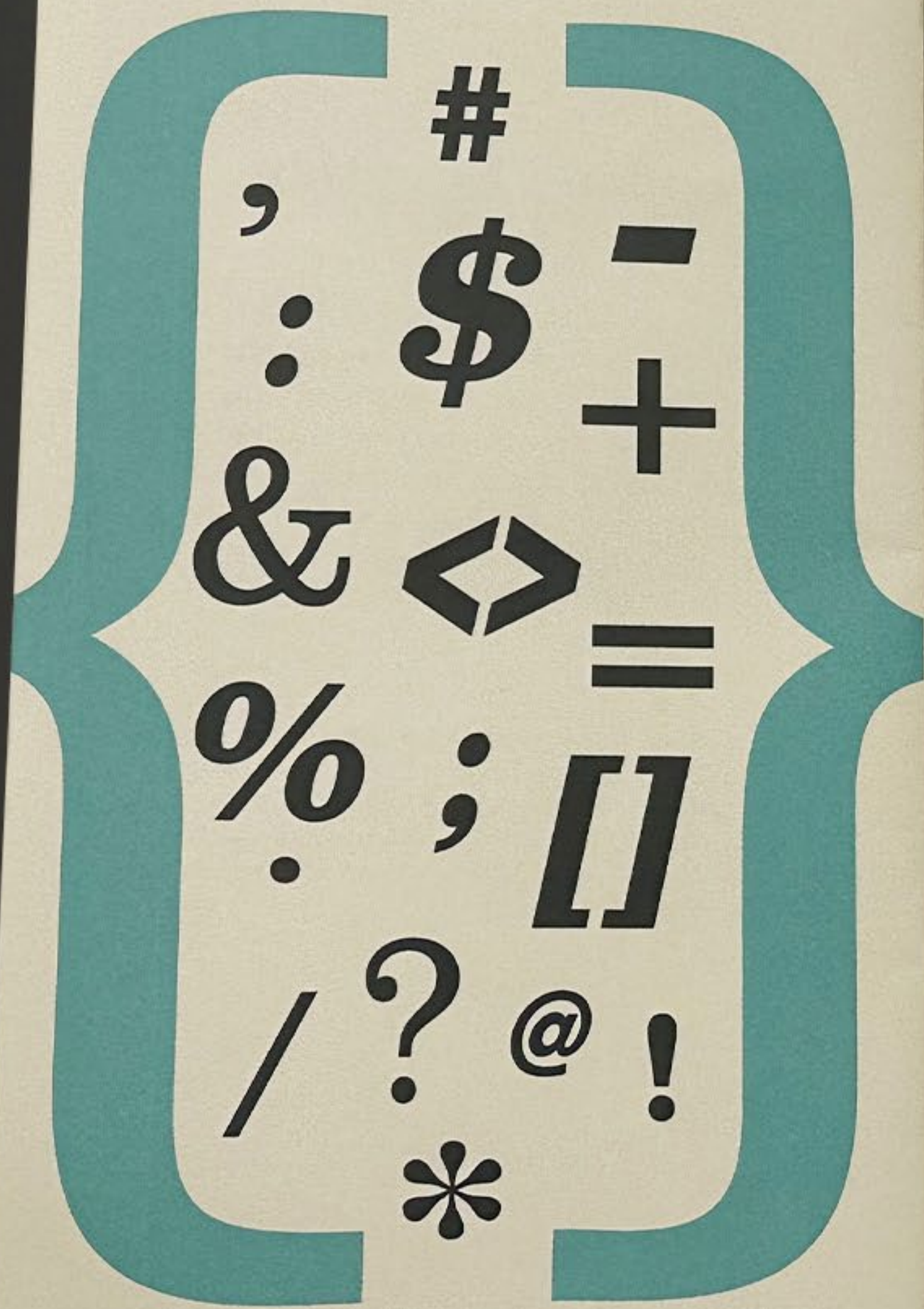
Clarendon / Egyptian

The purpose of these posts is to ignite a curiosity to discover what typefaces can bring to what you are working on. By having a little information behind who it is, where it came from, and how it's used, you can hopefully choose a typeface that better reflects what you want to express.

14-Point

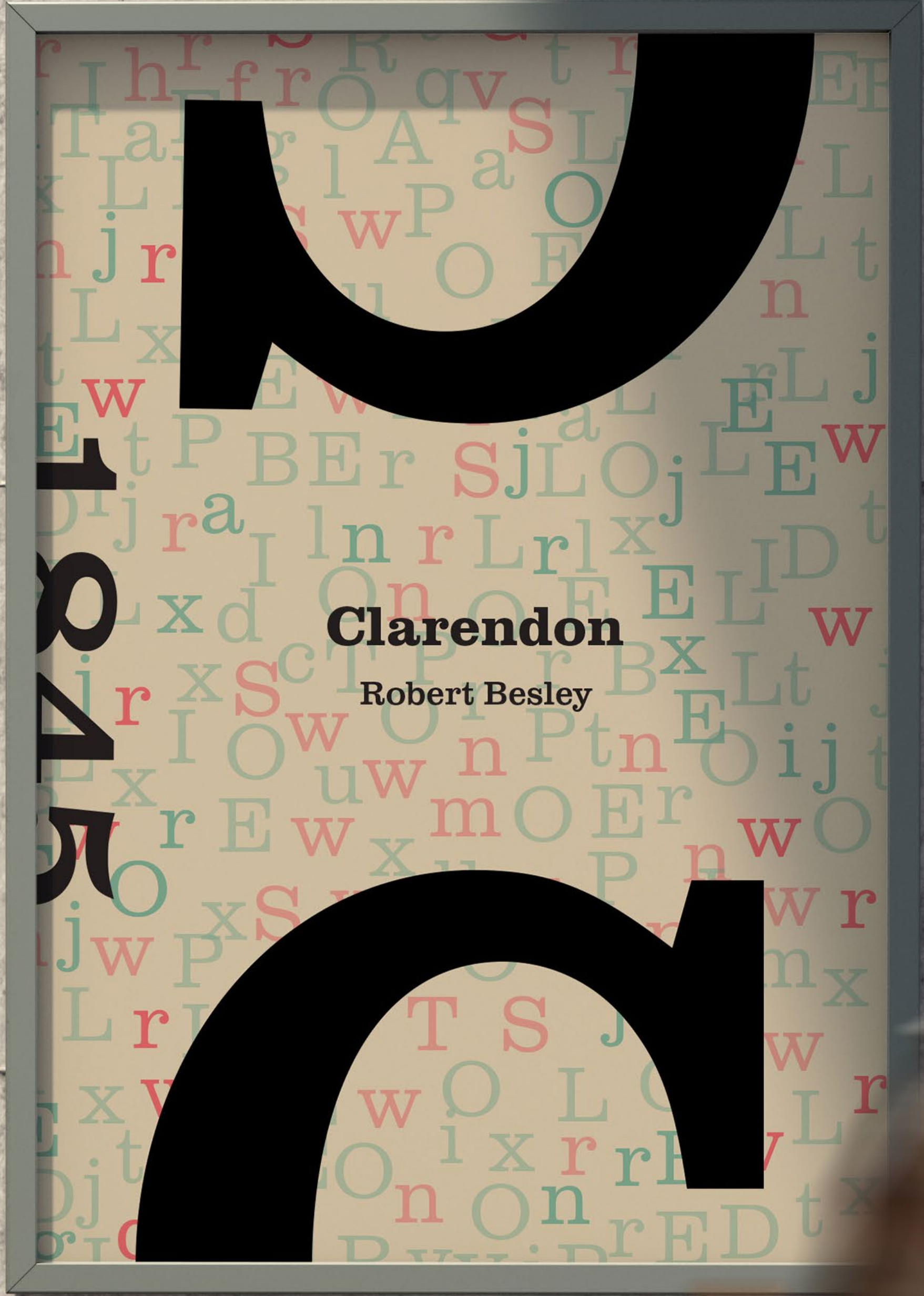
The purpose of these posts is to ignite a curiosity to discover what typefaces can bring to what you are working on. By having a little information behind who it is, where it came from, and how it's used, you can hopefully choose a typeface that better reflects what you want to express.

11-Point



“ ... but no sooner was the time of Copyright (three years) allowed by that Act expired, than the Trade was inundated with all sorts of Piracies and Immitations, some of them mere effigies of letters. ”

— Robert Besley



Clarendon

Robert Besley

THANK YOU